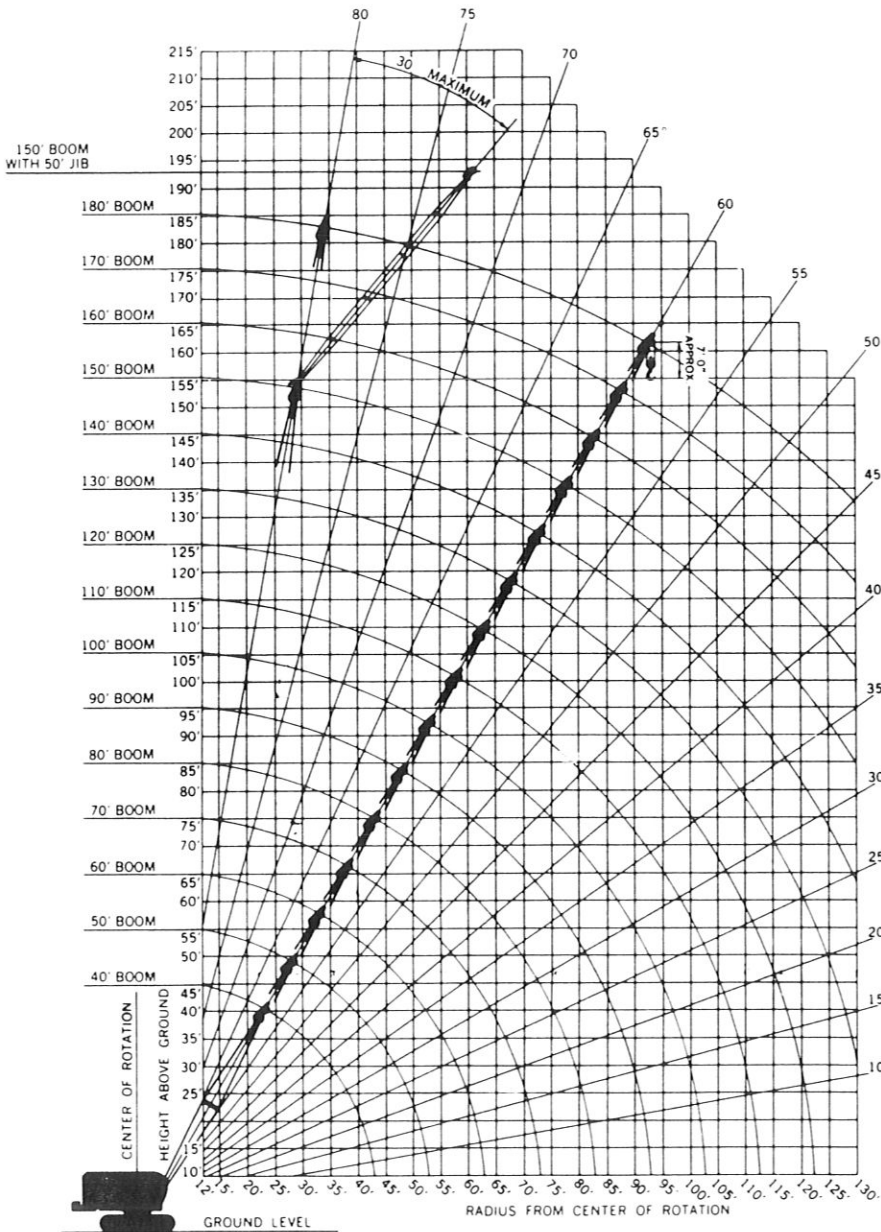


# P&H<sup>®</sup> 670-WLC

## 70-ton Crawler Crane 150' Boom plus 50' Jib 180' boom



Your versatile P & H 670-WLC adapts readily to your special operating needs. This brochure contains these crane rating charts:

### Standard Boom:

- 1 • 30,000 lbs. counterweight
  - Crawlers extended
  - 40 to 180 foot booms
- 2 • 30,000 lbs. counterweight
  - Crawlers retracted
  - 40 to 150 foot booms

### Jib Ratings

**THIS P&H MODEL  
670-WLC MEETS THE  
REQUIREMENTS OF  
ANSI B30.5-1968.  
BOOM STRUCTURE HAS  
BEEN TESTED PER  
SAE J987. MACHINE  
STABILITY HAS BEEN  
TESTED PER SAE J765.**

**Standard  
50" wide x 50" deep  
Boom**

**crane lifting capacities  
working ranges**

