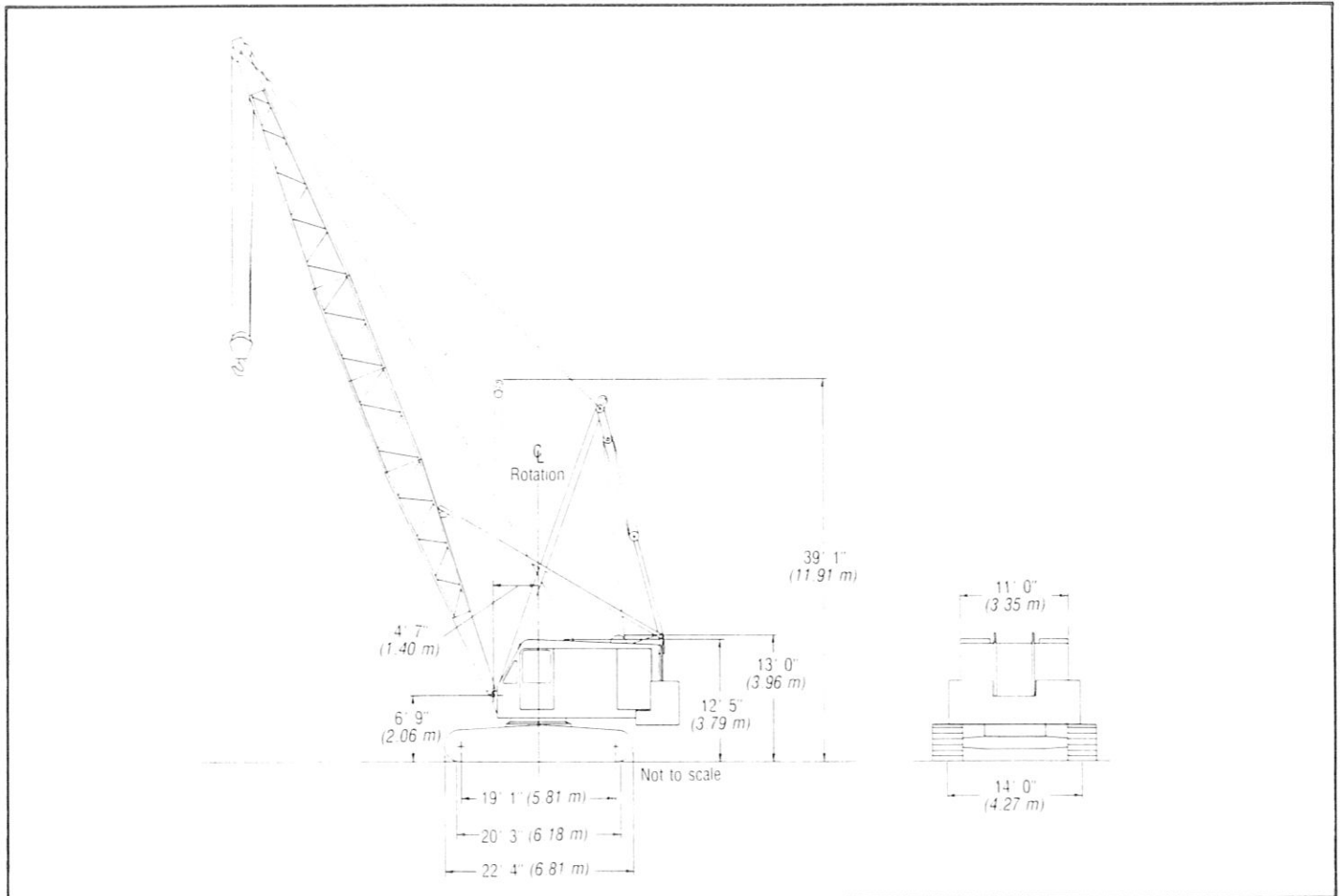


General Specifications

Link-Belt® 110-ton (99.11 metric ton)

Wire rope crawler crane/excavator

LS-418A



General dimensions	Feet	meters
Basic angle boom length	50' 0"	15.24
Basic tubular boom lengths:	50' 0"	15.24
Overall width:	—	—
— with 38" (0.96 m) track shoes	17' 2"	5.23
— with 44" (1.12 m) track shoes	17' 8"	5.38
Minimum ground clearance	1' 2"	0.36
Clearance under counterweight "A"	3' 11"	1.19
Clearance under counterweight "AB"	3' 5"	1.04
Clearance width less crawler side frames, counterweight, and catwalks	15' 7"	4.75

General dimensions	Feet	meters
Overall width for transport less side frames and catwalks; axles in line with upper	11' 0"	3.35
Overall width of counterweight	13' 9"	4.19
Width of cab less catwalks	11' 0"	3.35
Width of cab with catwalks both sides	15' 2"	4.62
Tailswing of counterweight "A"	14' 6"	4.42
Tailswing of counterweight "AB"	15' 2"	4.62
Overall height for transport — basic machine less crawler side frames	11' 1"	3.63
Overall height, live boom mast with 50' (15.24 m) boom horizontal	23' 7"	7.19

