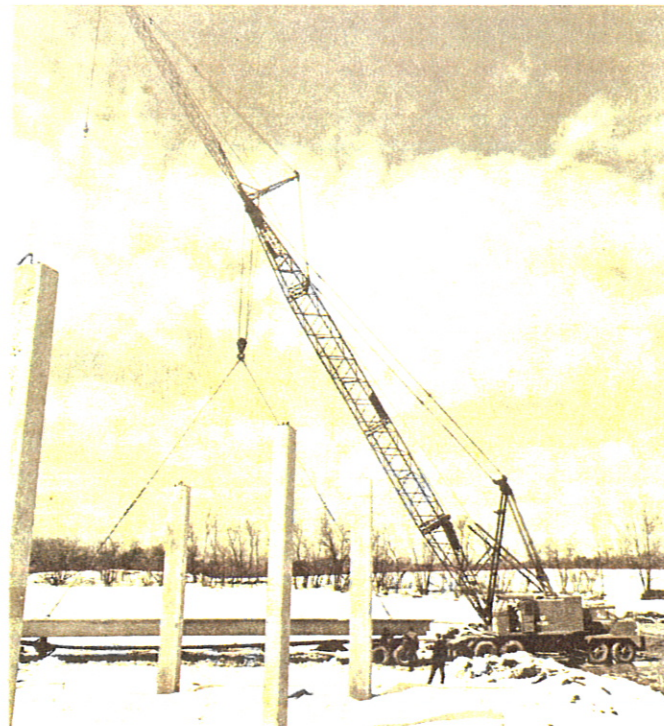




HC-218 FLYSHEET CARRIER MOUNTED CRANE

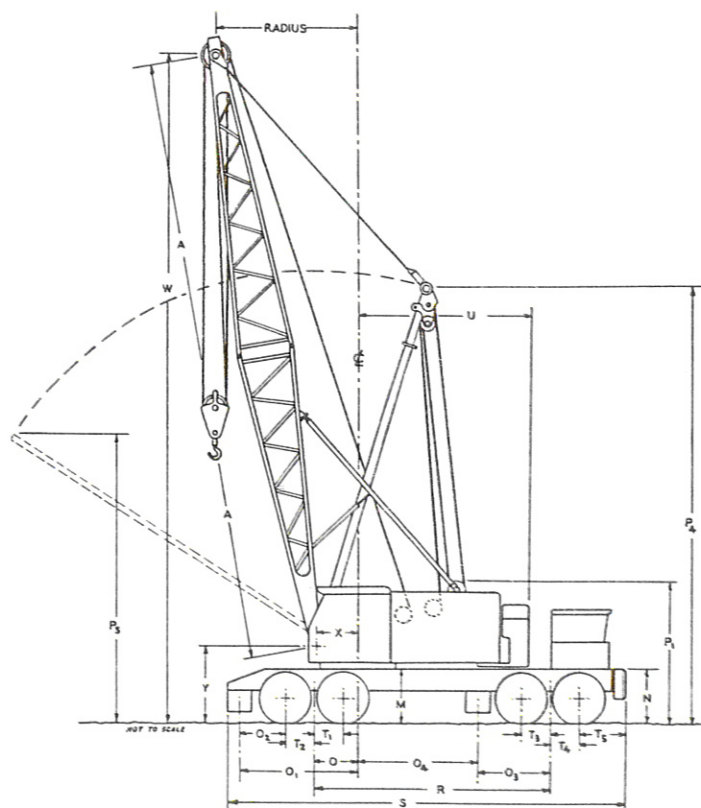
*Dimensions — Working ranges —
Specifications — Lifting capacities*



DIMENSIONS AND WORKING RANGES

Carrier — 8 x 4, 11' 0" Wide		
Basic boom length	A	40' 0"
Overall height, top of turntable bearing plate	M	4' 8"
Ground clearance under counterweight	N	4' 11"
Centerline rotation to rear axle bogie pivot	O	3' 8"
Centerline rotation to center rear outrigger	O ₁	10' 0"
Center rear rear axle to center rear outrigger	O ₂	3' 11"
Center front axle bogie to center front outrigger	O ₃	6' 0"
Centerline rotation to center front outrigger	O ₄	10' 0"
Overall height, boomhoist bail sheave	P ₁	11' 6"
Height, over vertical extended boom live mast	P ₄	31' 5"
Height, over extended boom live mast with basic 40' boom horizontal over rear of carrier	P ₅	17' 0"
Minimum ground clearance under carrier	Q	0' 11"
Wheelbase (236")	R	19' 8"
Overall length over rear outrigger box —		
with front bumper counterweight	S	33' 4"
without front bumper counterweight	S	32' 9"
Center rear axles to pivot of rear bogie	T ₁ & T ₂	2' 5"
Center front axles to pivot of front bogie	T ₃ & T ₄	2' 5"
Center front axle to front bumper	T ₅	3' 4"
Center front front axle to front bumper ctwt.	T ₅	3' 11"
Tailswing of counterweight	U	14' 0"
Radius of boom hinge pin	X	3' 6"
Height of boom hinge pin	Y	6' 7"
Overall height, basic 40' boom in travel position with boom live mast retracted and linked to boom —		
Boom over front end of carrier (boom 1" above boom guide)		14' 6 1/2"
Boom over rear end of carrier (boom horizontal)		11' 6"
Overall length*, basic 40' boom in travel position with boom live mast retracted and linked to boom —		
Boom over front end of carrier (boom 1" above boom guide)		60' 5"
Boom over rear end of carrier (boom horizontal)		67' 9"
Overall width outriggers retracted (floats removed)		11' 0"
Width, outriggers extended (C/L to C/L of jacks)		20' 0"
Overall width, outriggers extended (over jacks)		20' 11"
Center rear rear axle to center front front axle		24' 6"
Center front rear axle to center rear front axle		14' 10"
Centers rear tandem axles	T ₁ + T ₂	4' 10"
Centers front tandem axles	T ₃ + T ₄	4' 10"
Overall cab width		10' 6"

*Overall length is figured without bumper counterweight.



This machine as manufactured conforms with the requirements of: ANSI B30.5-1968 and, when equipped with suitable load and angle indicating devices, conforms with THE DEPARTMENT OF LABOR SAFETY AND HEALTH REGULATIONS as listed in the: FEDERAL REGISTER Vol. 36 Nos. 75 and 105 (OSHA)

