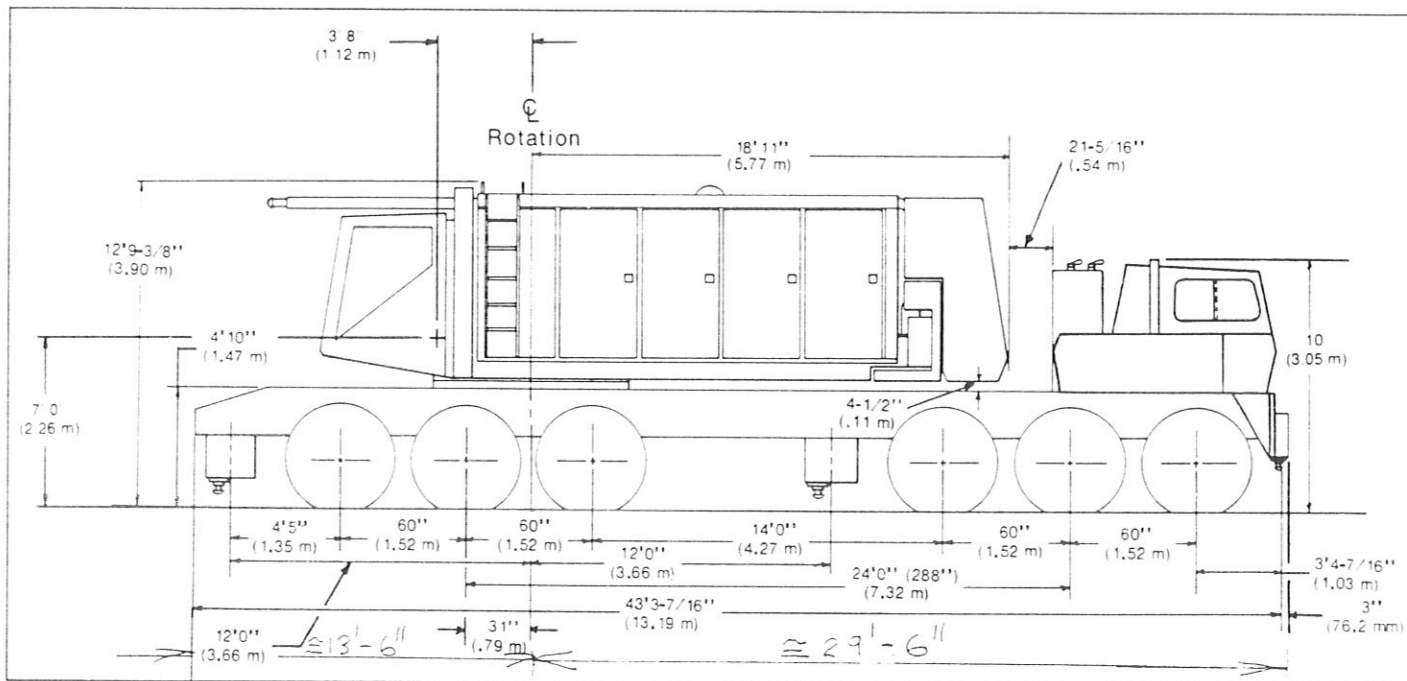


General Specifications

Link-Belt® 200-ton (181.40 metric ton)

Wire rope truck crane

HC-258



General Dimensions	Feet	Meters
Over-all width, outriggers extended (over floats)	26' 11"	8.20
Over-all width, outriggers extended (c/l of jacks)	24' 0"	7.32
Over-all width, outriggers retracted (jacks removed)	11' 10"	3.61
Vehicle clearance circle, over outside of front bumper	149' 2"	45.97
Vehicle clearance circle, over outside of front bumper ctwt.	150' 7"	45.90
Minimum ground clearance	1' 2"	.36
Ctwt. tailswing, across corners	19' 10"	6.05
Over-all width cab (upper)	11' 10"	3.61
Basic boom length — hammerhead	40' 4"	12.19
— tapered tip	120' 0"	36.58
Radius of boom hinge pin	3' 8"	1.12
Height of boom hinge pin	7' 0"	2.26
Over-all length; boom in travel position over rear of carrier, with "A" upper and "A" bumper ctwts. only —	—	—
40' (12.19 m) basic hammerhead boom	74' 23/8" ①	22.62 ①
120' (36.58 m) basic tapered tip boom	155' 5/8" ①	47.39 ①
Height, over boom live mast w/boom in travel position over rear of carrier —	—	—
40' (12.19 m) basic hammerhead boom	18' 8" ②	5.69 ②
120' (36.58 m) basic tapered tip boom	33' 2"	10.11
Ground clearance under ctwt.	5' 2 1/2"	1.59

① Interference with carrier cab prohibits over-the-road travel with either boom horizontal over front of carrier
 ② Special boom carrying links (for hammerhead boom only) reduce over-all height to 12' 9" (3.89 m).

